

**RECORD OF THE TEST
TO DETERMINE THE EFFECT
OF A COSMETIC PRODUCT AGAINST WRINKLES**

Test evaluated by: National Reference Centre for Cosmetics [National Institute for Public Health in Prague (NIPH), Centre for Health and the Environment].

Clinical conduct of the study: Vocilkovi s.r.o., Na Malovance 6, 169 00 Praha 6

Client: **Allivictus s.r.o.**
Podhradní 437
552 03 Česká Skalice
Czech Republic

Date of study: 15 Apr – 16 Apr 2013
Reference number: CTZB 187-1386/13-143

The test was performed in accordance with Cosmetic Product Test Guidelines for Assessment of Human Skin Compatibility, Colipa, Bruxelles 1997, Guidelines for the Evaluation of the Efficacy of Cosmetic Products, Colipa, Bruxelles 1997, (COLIPA = The European Cosmetic Toiletry and Perfumery Association)

Study objective: Determine the effect of the cosmetic product against wrinkles using digital image analysis

Tested sample:

1. EFFFI gold EXCLUSIVE against wrinkles

TEST REPORT

PREPARATION OF SAMPLES

The sample was prepared without any modifications.

HUMAN SUBJECTS

The selection of human subjects and the testing procedures are governed by the principles anchored in the International Ethical Guidelines for Biomedical Research Involving Human Subjects (CIOMS Geneva 1993). The study has been conducted based on approval of the Ethics Committee, NIPH.

The subjects were selected based on the principle of completely voluntary participation. All volunteers met the study enrolment conditions and for this purpose they completed a special questionnaire. All study documentation is confidential. The test involved 30 subjects.

The volunteers were not allowed to apply any cosmetic products on the skin of their face during the study.

SET OF HUMAN SUBJECTS

| Human subject number | Initials | Age | Sex |
|----------------------|----------|-----|-----|
| 1 | DH | 58 | F |
| 2 | ML | 59 | F |
| 3 | KZ | 56 | F |
| 4 | JL | 51 | F |
| 5 | ŠH | 59 | F |
| 6 | JZ | 48 | F |
| 7 | KL | 53 | F |
| 8 | PD | 53 | F |
| 9 | SM | 62 | F |
| 10 | KJ | 54 | F |
| 11 | OD | 56 | F |
| 12 | ŠI | 55 | F |
| 13 | VK | 46 | F |
| 14 | PM | 48 | F |
| 15 | HZ | 51 | F |
| 16 | UJ | 44 | F |
| 17 | TJ | 47 | F |
| 18 | VV | 53 | F |
| 19 | HH | 49 | F |
| 20 | FI | 53 | F |
| 21 | KV | 56 | F |
| 22 | DL | 61 | F |
| 23 | KJ | 54 | F |
| 24 | ŠO | 61 | F |
| 25 | VL | 52 | F |
| 26 | KD | 47 | F |
| 27 | DŠ | 45 | F |
| 28 | UR | 50 | F |
| 29 | JM | 41 | F |
| 30 | MB | 52 | F |

TEST METHODOLOGY

Single open skin test

The sample was applied in the amount of 0.1 mg over the area of 2.5 x 2.5 cm, in the external corner of the right eye, and the same procedure was performed in the area of the left eye. One application was carried out in the right eye and one application in the left eye.

No other cosmetic products were applied in the test area for 48 hours before and after the test.

Measurement intervals

Digital image of the test areas was obtained for both eyes before the first application and subsequently in the intervals of 1 h, 3 h, 6 h and 24 h after the application.

Digital image analysis

The digital image was obtained using the digital camera Olympus with an extension piece to ensure uniform lighting and constant distance of the lens from the skin surface. The digital image was converted to a black-and-white image, which was converted to the digital image of the skin relief using two-dimensional derivative. Planimetric and statistical analysis of the skin relief was performed using the software LUCIA Measurement (Laboratory Imaging s.r.o., Prague).

Changes in the structure and area of the skin relief of the wrinkles after application of the tested cosmetic product are expressed in percentage of the wrinkle structure and area before the application. An example of changes in the skin relief structure and area after application of the cosmetic product is shown in Appendix 1.

RESULTS

| EFFFI gold EXCLUSIVE against wrinkles | | | |
|--|--|--------------------|---------------------|
| Digital image recording intervals | % compared to condition before application /* | MINIMUM /** | MAXIMUM /*** |
| 1 h from application | 33.1 | 17.0 | 49.3 |
| 3 h from application | 38.9 | 23.2 | 54.6 |
| 6 h from application | 42.1 | 25.3 | 58.9 |
| 24 h from application | 41.6 | 25.5 | 57.6 |

/* Deviation of the current digital image analysis value from the condition of digital image analysis before the first application in %

/** The least improvement in %

/*** The highest improvement in %

ASSESSMENT OF RESULTS

EFFFI gold EXCLUSIVE against wrinkles

Significant smoothing and reduction of the wrinkle area was demonstrated in all assessment intervals of the tested cosmetic product.

Mean improvement of the condition represents 33.1% to 41.6% in the assessment intervals of 1 h, 3 h, 6 h and 24 h after application of the cosmetic product.

The best maximum improvement was achieved in the assessment interval of 6 hours after application, i.e. by 58.9% compared to the wrinkle condition before application of the tested cosmetic product.

The study results document a significant effect of the tested cosmetic product on the smoothing of wrinkles even after a single application. The effect on the wrinkle structure and area shows a rapid onset and a stable, prolonged effect, for up to 24 h after application.

Fine wrinkles are up to completely smoothed and deeper wrinkles are significantly reduced for the period of activity of the cosmetic product.

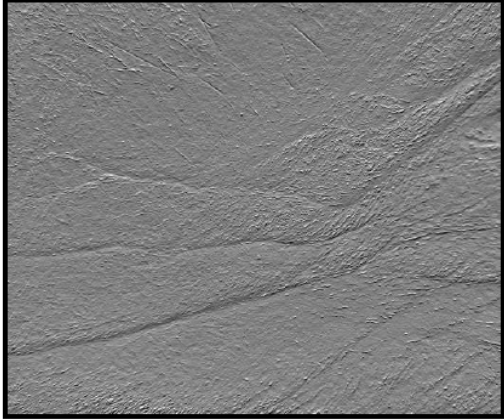
Date: 29 Apr 2013

MUDr. Dagmar Jírová, CSc.
Head of the study and results assessment

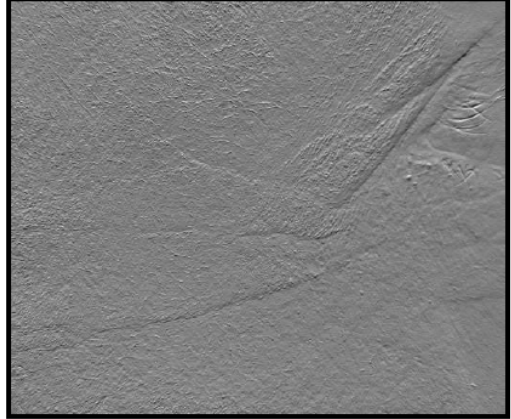
MUDr. Alena Vocilková
Study processing and implementation

Example of the skin relief image of one volunteer

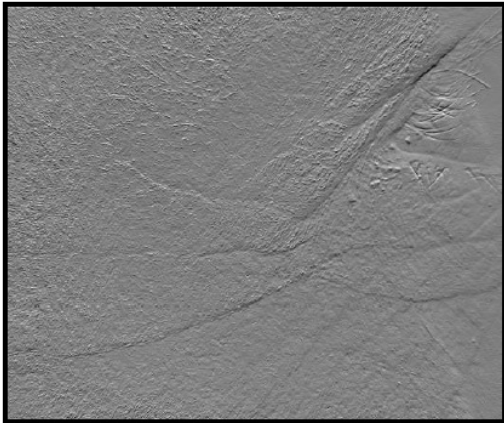
Corner of the right eye before application



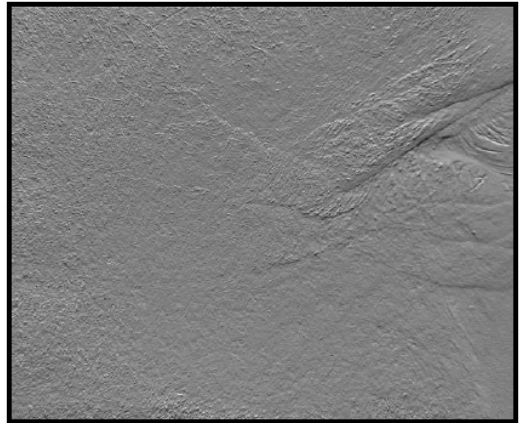
Corner of the right eye 1 h after application



Corner of the right eye 3 h after application



Corner of the right eye 6 h after application



Corner of the right eye 24 h after application

